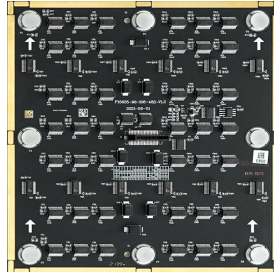
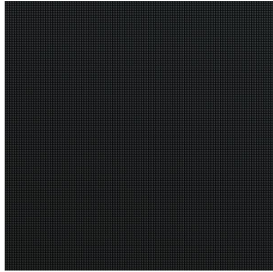
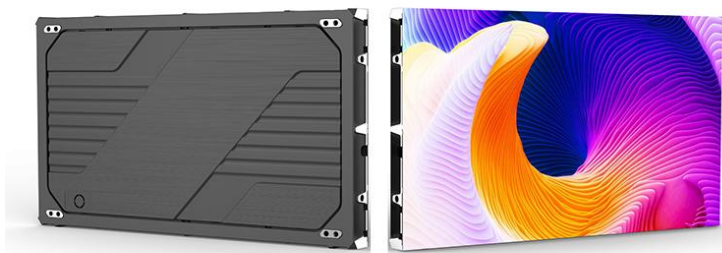


P0.93 indoor Die-Cast Aluminum 600*337.5/600*675 Cabinet Full Color Led Display Specification



Module



600*337.5 Cabinet



600*675 Cabinet

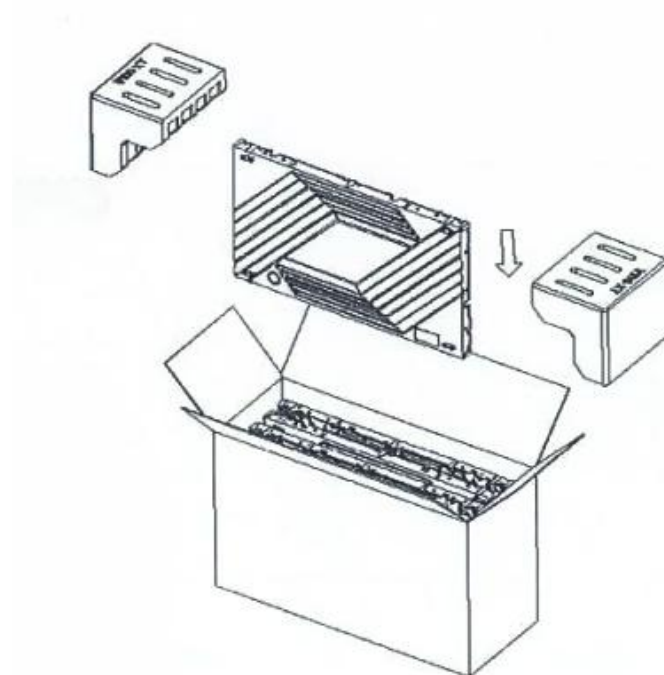
- ◆ High reliability: COB modules, moisture proof, Anti-collision, Scrubable lamp surface ,low power consumption, fast heat dissipation, effectively prolong the service life of the chip.
- ◆ Good consistency ,seamless assemble, available for 2K/4K/8K solutions.
- ◆ Magnetic modular design, it can be mounted to the wall and maintained from front, save space and guarantee worry-free operation of large screen.
- ◆ Constant current drive chip,low power dissipation, uniform light,meet the high refresh rate/contrast ratio/gray level requirements.
- ◆ Support point by point calibration function, insure the color and brightness uniformity of whole screen after assemble, and improve visual performance.
- ◆ 160° Ultra large horizontal and vertical viewing angel, Soft and not dazzling image, better visual performance.
- ◆ Widely applied to professional application, such as security monitoring/command and monitor system/conference room/museum/display/industrial design/exhibition, where need HD images.

Technical Parameters :

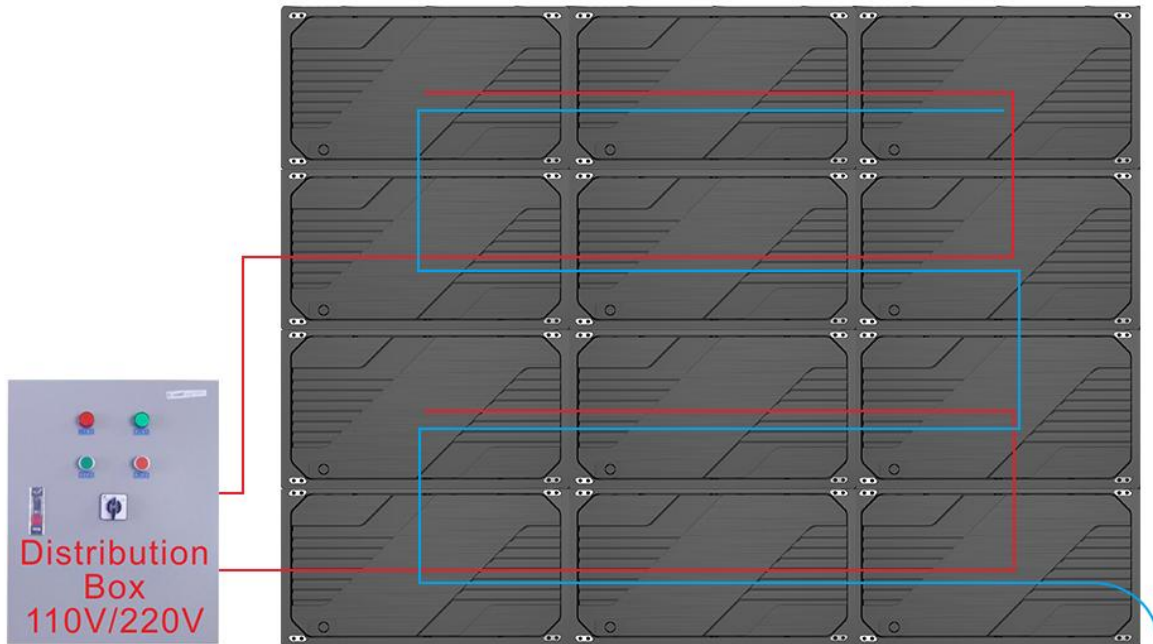
	Item	Specification Parameter
Module Parameter	Pixel Pitch、 Resolution rate、 size	0.93mm、 160*180、 150*168.75mm
	Pixel color、 Pixel LED	1R1G1B、 Inverted COB
	Module Power	10W
	Driving IC、 Driving way	ICND1069、 1/54S
	Surface Hardness	4H
Cabinet Parameter	Material、 Cabinet Weight(kg/Cabinet)	Die-Cast Aluminum 、 4kg/ Cabinet; 7.9kg/ Cabinet
	Resolution rate、 size、 Module quantity	640*360 Dots、 600*337.5*39.5mm、 4*2; 640*720 Dots、 600*675*39.5mm、 4*4
	Density	1137777 Dots/m ²
	White balance 、 Color temperature	600 CD/m ² 、 9300K
	view angel、 Non-Flatness、 Module interval	H/V: 160° /160° 、 <0.1mm、 <0.1mm
	Maximal power/m ² 、 Average power/m ²	380W/m ² 、 130W/m ²
	Frame frequency、 Refresh frequency、 Gray grade	60Hz、 3840Hz、 ≥13bit
	Control system、 System supports	Novastar, Windows
	Working temperature、 Protection grade	- 10~40℃、 Front/Back: IP54(surface of the PCB board)
*Reference information, different configurations, different parameters		

Package Parameters :

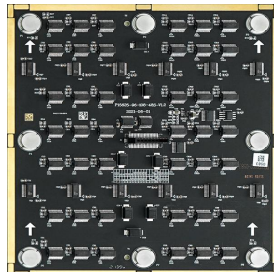
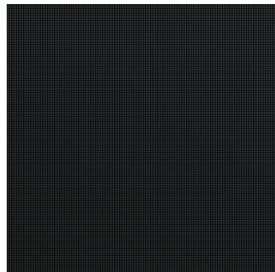
Gross Weight (kg)	18kg (Estimated data,4pcs /Case)
Outer Package Size	664*263*403mm (Estimated data,4pcs /Case)
Packing Material	Carton+pearl cotton +protection corner



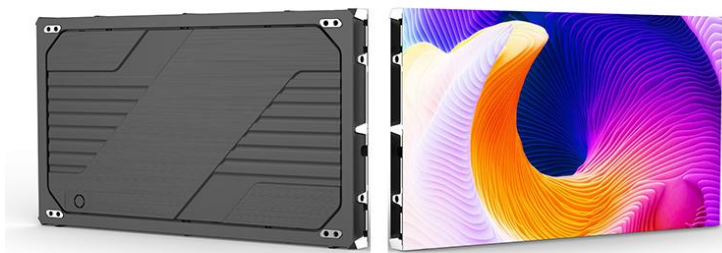
Assembly Sketch Map/Power Cable And Signal Cable Connection Sketch Map:



P0.78 indoor Die-Cast Aluminum 600*337.5 Cabinet Full Color Led Display Specification



Module



600*337.5 Cabinet



600*675 Cabinet

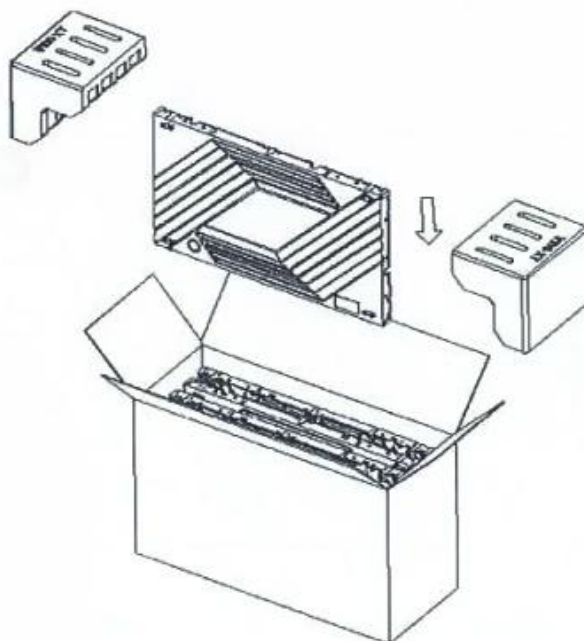
- ◆ High reliability: COB modules, moisture proof, Anti-collision, Scrubable lamp surface ,low power consumption, fast heat dissipation, effectively prolong the service life of the chip.
- ◆ Good consistency ,seamless assemble, available for 2K/4K/8K solutions.
- ◆ Magnetic modular design, it can be mounted to the wall and maintained from front, save space and guarantee worry-free operation of large screen.
- ◆ Constant current drive chip,low power dissipation, uniform light,meet the high refresh rate/contrast ratio/gray level requirements.
- ◆ Support point by point calibration function, insure the color and brightness uniformity of whole screen after assemble, and improve visual performance.
- ◆ 160° Ultra large horizontal and vertical viewing angel, Soft and not dazzling image, better visual performance.
- ◆ Widely applied to professional application, such as security monitoring/command and monitor system/conference room/museum/display/industrial design/exhibition, where need HD images.

Technical Parameters :

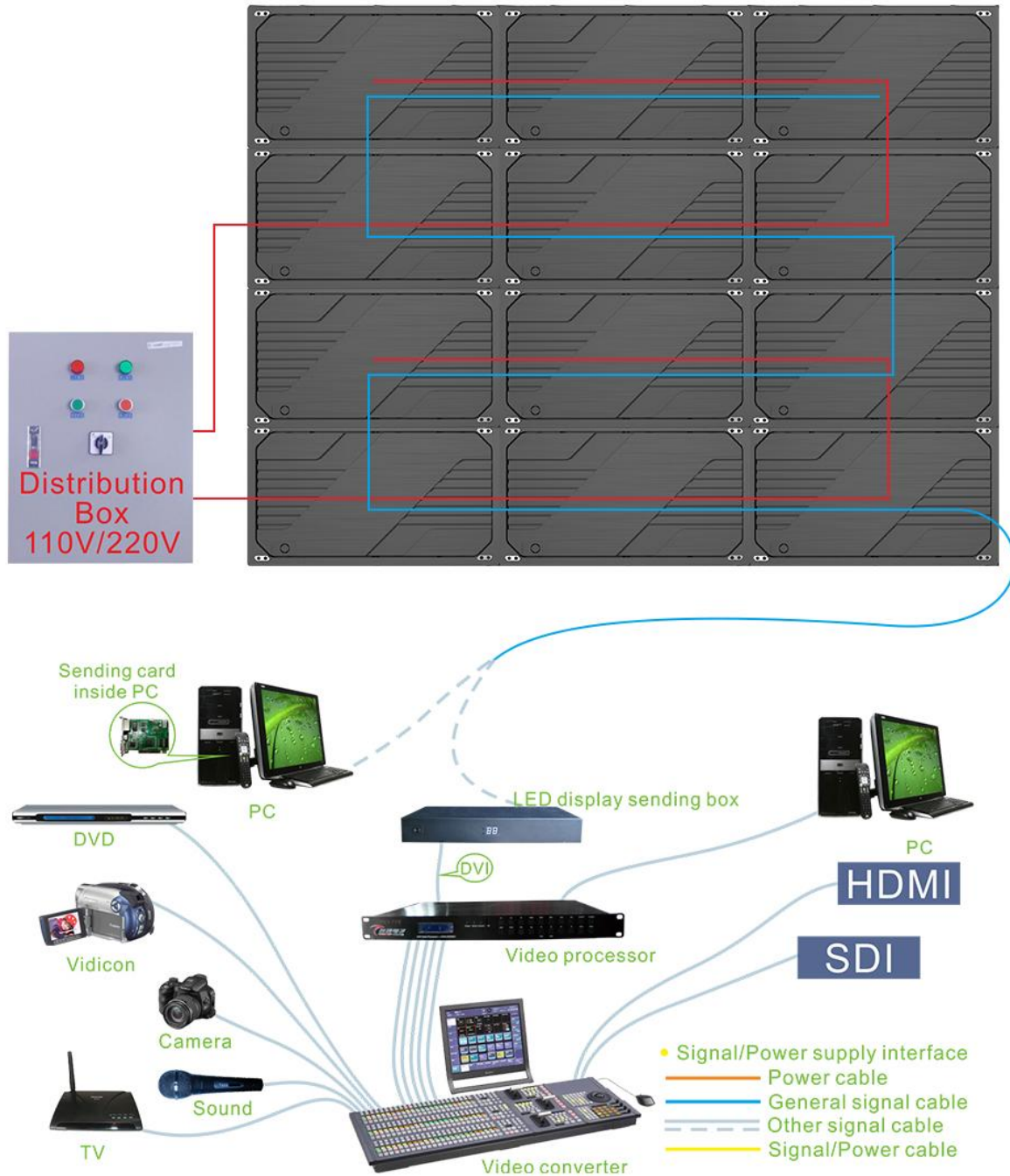
	Item	Specification Parameter
Module Parameter	Pixel Pitch、 Resolution rate、 size	0.78mm、 192*216、 150*168.75mm
	Pixel color、 Pixel LED	1R1G1B、 Inverted COB
	Module Power	10W
	Driving IC、 Driving way	ICND1069、 1/48S
	Surface Hardness	4H
Cabinet Parameter	Material、 Cabinet Weight(kg/Cabinet)	Die-Cast Aluminum 、 4kg/ Cabinet; 7.9kg/ Cabinet
	Resolution rate、 size、 Module quantity	768*432 Dots、 600*337.5*39.5mm、 4*2;
	Density	1638400 Dots/m ²
	White balance 、 Color temperature	600 CD/m ² 、 9300K
	view angel、 Non-Flatness、 Module interval	H/V: 160° /160° 、 <0.1mm、 <0.1mm
	Maximal power/m ² 、 Average power/m ²	375W/m ² 、 125W/m ²
	Frame frequency、 Refresh frequency、 Gray grade	60Hz、 3840Hz、 ≥13bit
	Control system、 System supports	Novastar, Windows
Working temperature、 Protection grade	- 10~40℃、 Front/Back: IP54(surface of the PCB board)	
*Reference information, different configurations, different parameters		

Package Parameters :

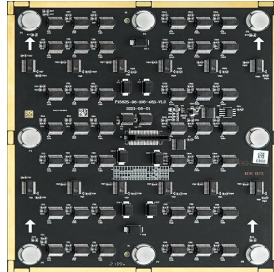
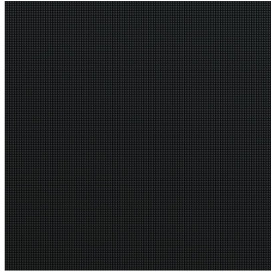
Gross Weight (kg)	18kg (Estimated data,4pcs /Case)
Outer Package Size	664*263*403mm (Estimated data,4pcs /Case)
Packing Material	Carton+pearl cotton +protection corner



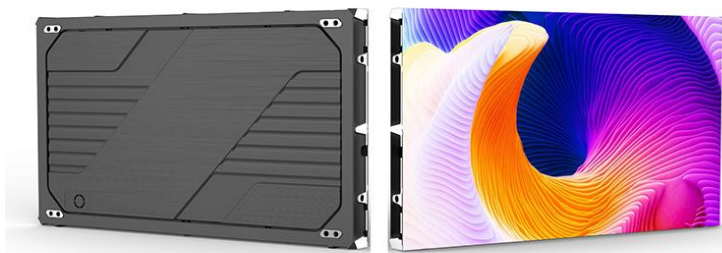
Assembly Sketch Map/Power Cable And Signal Cable Connection Sketch Map:



P1.25 indoor Die-Cast Aluminum 600*337.5/600*675 Cabinet Full Color Led Display Specification



Module



600*337.5 Cabinet



600*675 Cabinet

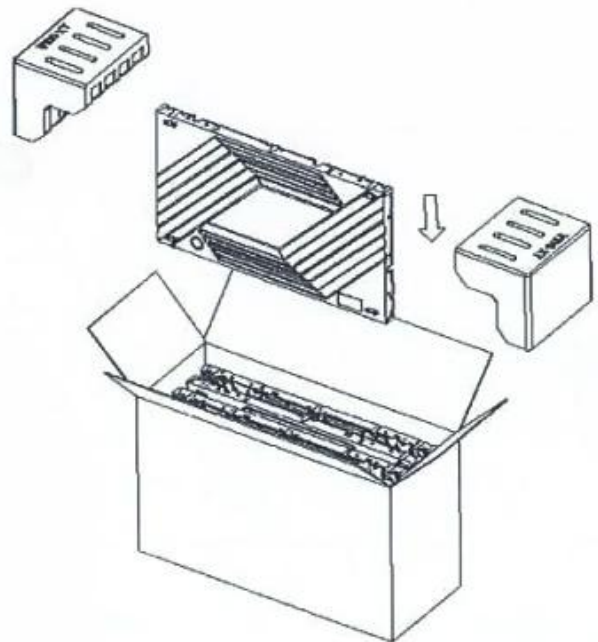
- ◆ High reliability: COB modules, moisture proof, Anti-collision, Scrubable lamp surface ,low power consumption, fast heat dissipation, effectively prolong the service life of the chip.
- ◆ Good consistency ,seamless assemble, available for 2K/4K/8K solutions.
- ◆ Magnetic modular design, it can be mounted to the wall and maintained from front, save space and guarantee worry-free operation of large screen.
- ◆ Constant current drive chip,low power dissipation, uniform light,meet the high refresh rate/contrast ratio/gray level requirements.
- ◆ Support point by point calibration function, insure the color and brightness uniformity of whole screen after assemble, and improve visual performance.
- ◆ 160° Ultra large horizontal and vertical viewing angel, Soft and not dazzling image, better visual performance.
- ◆ Widely applied to professional application, such as security monitoring/command and monitor system/conference room/museum/display/industrial design/exhibition, where need HD images.

Technical Parameters :

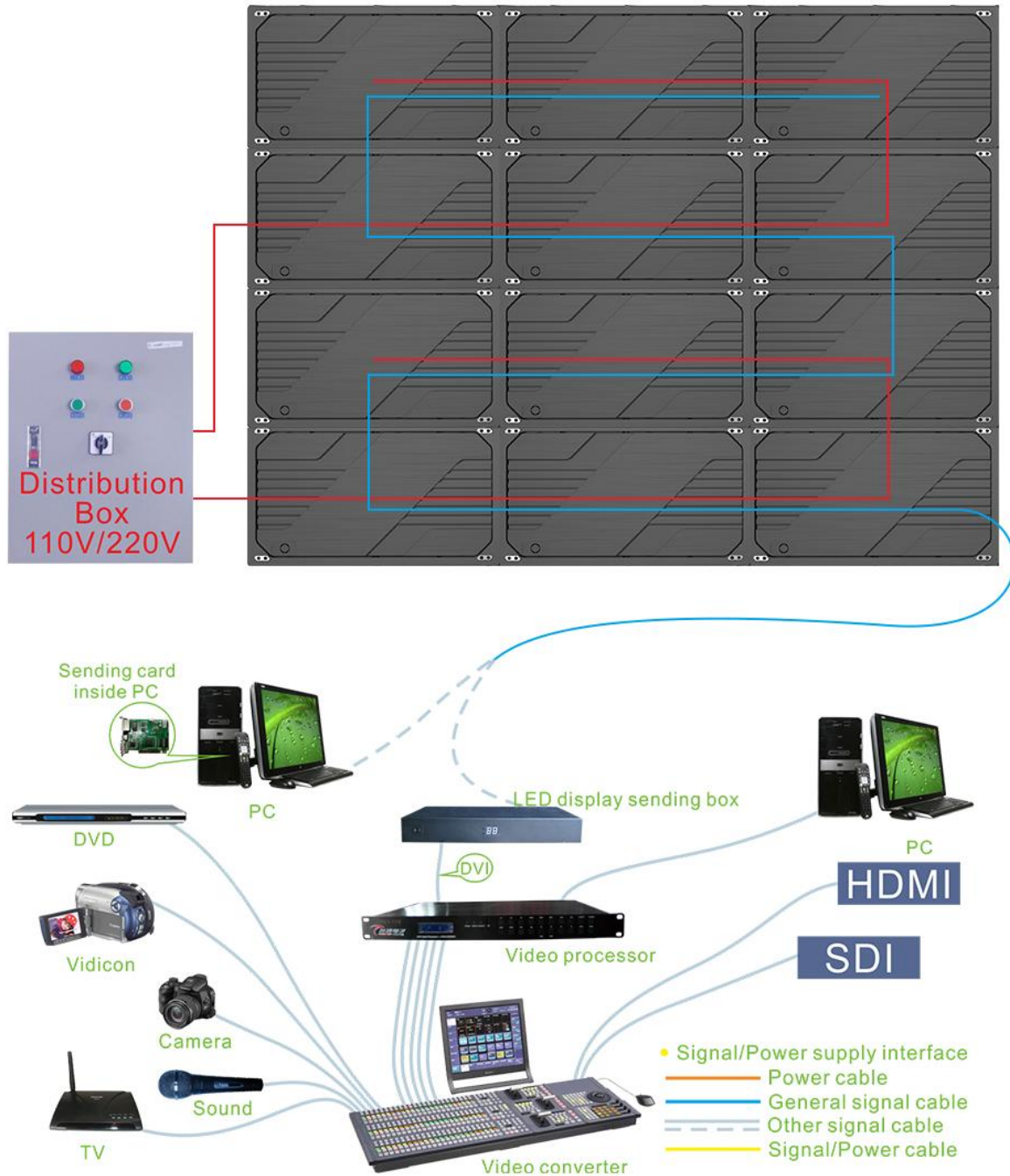
	Item	Specification Parameter
Module Parameter	Pixel Pitch、 Resolution rate、 size	1.25mm、 120*135、 150*168.75mm
	Pixel color、 Pixel LED	1R1G1B、 Inverted COB
	Module Power	17W
	Driving IC、 Driving way	ICND2065、 1/60S
	Surface Hardness	4H
Cabinet Parameter	Material、 Cabinet Weight(kg/Cabinet)	Die-Cast Aluminum 、 4kg/ Cabinet; 7.9kg/ Cabinet
	Resolution rate、 size、 Module quantity	480*270 Dots、 600*337.5*39.5mm、 4*2; 480*540 Dots、 600*675*39.5mm、 4*4
	Density	640000 Dots/m ²
	White balance 、 Color temperature	600 CD/m ² 、 9300K
	view angel、 Non-Flatness、 Module interval	H/V: 160° /160° 、 <0.1mm、 <0.1mm
	Maximal power/m ² 、 Average power/m ²	700W/m ² 、 230W/m ²
	Frame frequency、 Refresh frequency、 Gray grade	60Hz、 3840Hz、 ≥13bit
	Control system、 System supports	Novastar, Windows
	Working temperature、 Protection grade	- 10~40℃、 Front/Back: IP54(surface of the PCB board)
*Reference information, different configurations, different parameters		

Package Parameters :

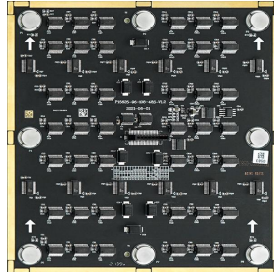
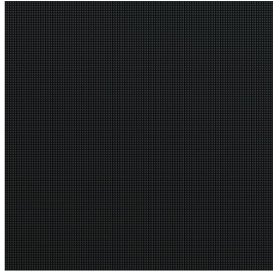
Gross Weight (kg)	18kg (Estimated data,4pcs /Case)
Outer Package Size	664*263*403mm (Estimated data,4pcs /Case)
Packing Material	Carton+pearl cotton +protection corner



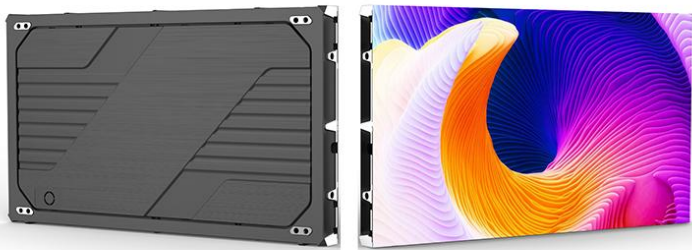
Assembly Sketch Map/Power Cable And Signal Cable Connection Sketch Map:



P1.56 indoor Die-Cast Aluminum 600*337.5/600*675 Cabinet Full Color Led Display Specification



Module



600*337.5 Cabinet



600*675 Cabinet

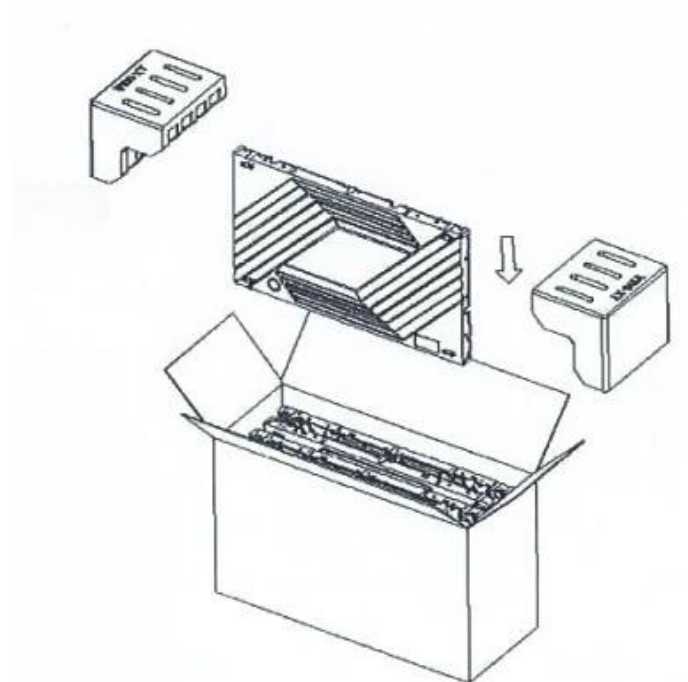
- ◆ High reliability: COB modules, moisture proof, Anti-collision, Scrubable lamp surface ,low power consumption, fast heat dissipation, effectively prolong the service life of the chip.
- ◆ Good consistency ,seamless assemble, available for 2K/4K/8K solutions.
- ◆ Magnetic modular design, it can be mounted to the wall and maintained from front, save space and guarantee worry-free operation of large screen.
- ◆ Constant current drive chip,low power dissipation, uniform light,meet the high refresh rate/contrast ratio/gray level requirements.
- ◆ Support point by point calibration function, insure the color and brightness uniformity of whole screen after assemble, and improve visual performance.
- ◆ 160° Ultra large horizontal and vertical viewing angel, Soft and not dazzling image, better visual performance.
- ◆ Widely applied to professional application, such as security monitoring/command and monitor system/conference room/museum/display/industrial design/exhibition, where need HD images.

Technical Parameters :

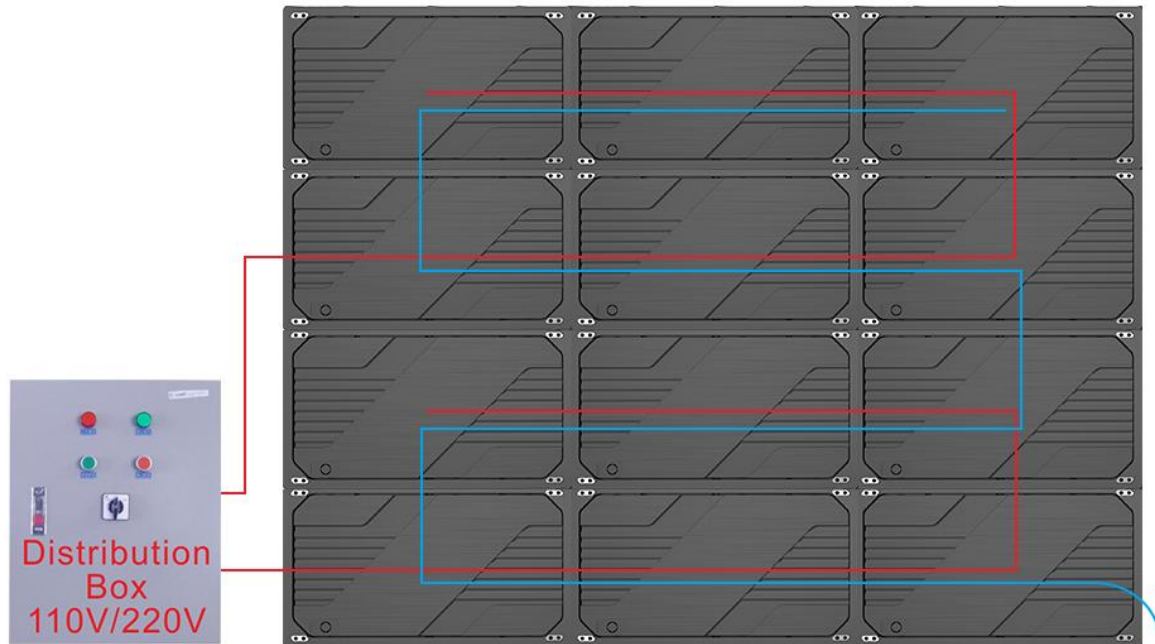
	Item	Specification Parameter
Module Parameter	Pixel Pitch、 Resolution rate、 size	1.56mm、 96*108、 150*168.75mm
	Pixel color、 Pixel LED	1R1G1B、 Inverted COB
	Module Power	17W
	Driving IC、 Driving way	ICND2065、 1/54S
	Surface Hardness	4H
Cabinet Parameter	Material、 Cabinet Weight(kg/Cabinet)	Die-Cast Aluminum 、 4kg/ Cabinet; 7.9kg/ Cabinet
	Resolution rate、 size、 Module quantity	384*216 Dots、 600*337.5*39.5mm、 4*2; 384*432 Dots、 600*675*39.5mm、 4*4
	Density	409600 Dots/m ²
	White balance 、 Color temperature	600 CD/m ² 、 9300K
	view angel、 Non-Flatness、 Module interval	H/V: 160° /160° 、 <0.1mm、 <0.1mm
	Maximal power/m ² 、 Average power/m ²	700W/m ² 、 230W/m ²
	Frame frequency、 Refresh frequency、 Gray grade	60Hz、 3840Hz、 ≥13bit
	Control system、 System supports	Novastar, Windows
	Working temperature、 Protection grade	- 10~40℃、 Front/Back: IP54 (surface of the PCB board)
*Reference information, different configurations, different parameters		

Package Parameters :

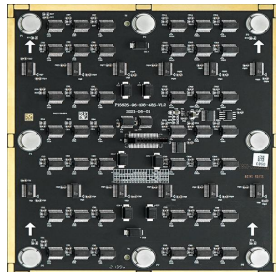
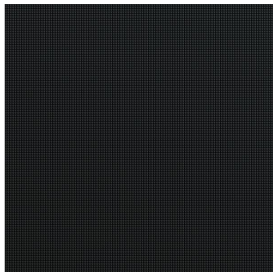
Gross Weight (kg)	18kg (Estimated data,4pcs /Case)
Outer Package Size	664*263*403mm (Estimated data,4pcs /Case)
Packing Material	Carton+pearl cotton +protection corner



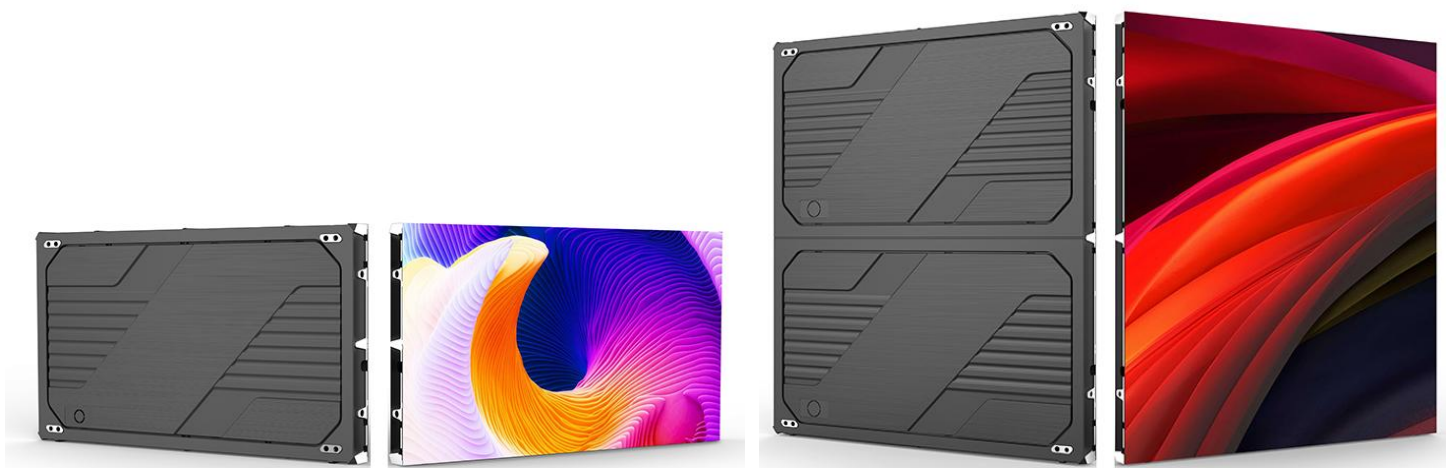
Assembly Sketch Map/Power Cable And Signal Cable Connection Sketch Map:



P1.87 indoor Die-Cast Aluminum 600*675 Cabinet Full Color Led Display Specification



Module



600*337.5 Cabinet

600*675 Cabinet

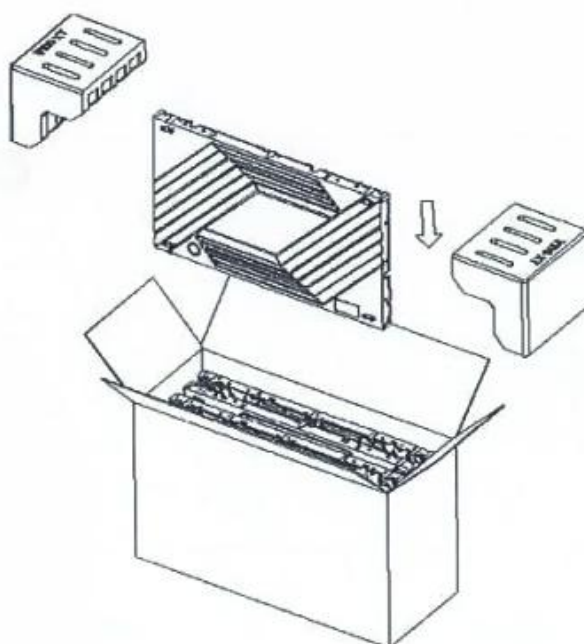
- ◆ High reliability: COB modules, moisture proof, Anti-collision, Scrubable lamp surface ,low power consumption, fast heat dissipation, effectively prolong the service life of the chip.
- ◆ Good consistency ,seamless assemble, available for 2K/4K/8K solutions.
- ◆ Magnetic modular design, it can be mounted to the wall and maintained from front, save space and guarantee worry-free operation of large screen.
- ◆ Constant current drive chip,low power dissipation, uniform light,meet the high refresh rate/contrast ratio/gray level requirements.
- ◆ Support point by point calibration function, insure the color and brightness uniformity of whole screen after assemble, and improve visual performance.
- ◆ 160° Ultra large horizontal and vertical viewing angel, Soft and not dazzling image, better visual performance.
- ◆ Widely applied to professional application, such as security monitoring/command and monitor system/conference room/museum/display/industrial design/exhibition, where need HD images.

Technical Parameters :

	Item	Specification Parameter
Module Parameter	Pixel Pitch、 Resolution rate、 size	1.875mm、 80*90、 150*168.75mm
	Pixel color、 Pixel LED	1R1G1B、 Inverted COB
	Module Power	16W
	Driving IC、 Driving way	ICND2065、 1/40S
	Surface Hardness	4H
	Cabinet Parameter	Material、 Cabinet Weight(kg/Cabinet)
Resolution rate、 size、 Module quantity		320*360 Dots、 600*675*39.5mm、 4*4
Density		284444Dots/m ²
White balance 、 Color temperature		550 CD/m ² 、 9300K
view angel、 Non-Flatness、 Module interval		H/V: 160° /160° 、 <0.1mm、 <0.1mm
Maximal power/m ² 、 Average power/m ²		650W/m ² 、 215W/m ²
Frame frequency、 Refresh frequency、 Gray grade		60Hz、 3840Hz、 ≥13bit
Control system、 System supports		Novastar, Windows
Working temperature、 Protection grade		- 10~40℃、 Front/Back: IP54(surface of the PCB board)
*Reference information, different configurations, different parameters		

Package Parameters :

Gross Weight (kg)	18kg (Estimated data,4pcs /Case)
Outer Package Size	664*263*403mm (Estimated data,4pcs /Case)
Packing Material	Carton+pearl cotton +protection corner



Assembly Sketch Map/Power Cable And Signal Cable Connection Sketch Map:

